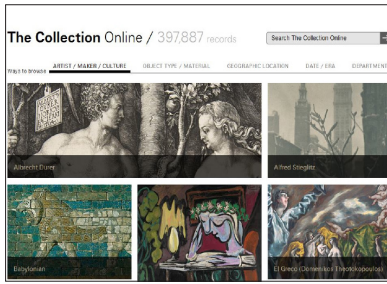


Resources at Your Fingertips!

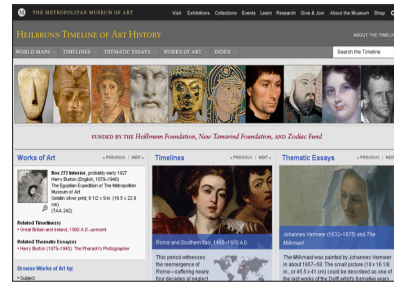
Use the Met's online resources for educators to support your teaching.



The Collection Online

www.metmuseum.org/collection/the-collection-online

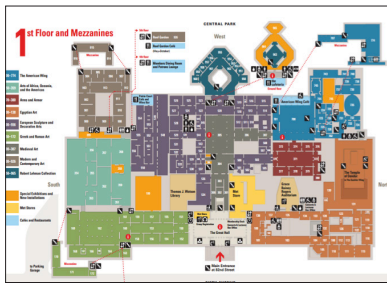
Find high-resolution images of works of art, related information and multimedia content, and the locations of objects in the galleries.



The Heilbrunn Timeline of Art History

www.metmuseum.org/toah

Discover works of art and essays relevant to your teaching—search by geographic location, time period, subject, artist name, and more.



Museum Map

www.metmuseum.org/visit/museum-map

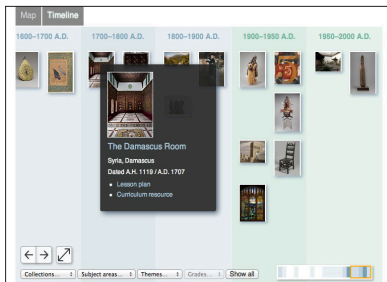
Identify the locations of works of art in the Museum and access gallery overviews.



School Group Self-Guides

www.metmuseum.org/schoolgroups

Use tour tips, introductions to the galleries, and lists of collection highlights to plan a self-guided class visit to the Museum.



Find an Educator Resource

www.metmuseum.org/edresources

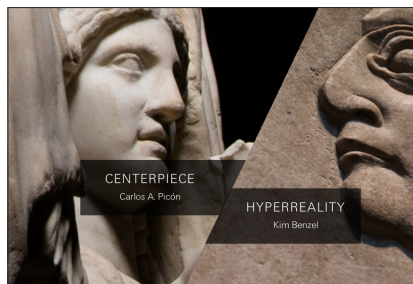
Search for teaching resources using this interactive map and timeline.



Publications for Educators

www.metmuseum.org/edcurriculum

Delve into resource guides for educators, which contain in-depth essays, information about works of art, and lesson plans.



82nd & Fifth

<http://82nd-and-fifth.metmuseum.org>

Explore works of art through the personal perspectives of Met curators in these short videos.



Visit Nolen Library

www.metmuseum.org/nolen

Consult a wide range of reference materials related to the Met's collection, including books, catalogues, and teacher resources.