

Cartoon Analysis

This will be a part of your work in
this course!

INTERPRETING POLITICAL CARTOONS

What are the contents, methods,
and purposes of political cartoons?



This is what we will be doing

- A cartoon will be given or chosen
- There are 10 questions that you will answer for each cartoon.
- Look at the 10 questions, read, etc.
- These ten questions will be written in **journal format**, meaning one page or more.
- The most difficult questions have the words: pun, ridicule, satire, and caricature

INTERPRETING POLITICAL CARTOONS

- METAPHOR- uses an object to note a similarity to something else. For example, using a tiger to represent one nation invading another.



Pun

- a joke exploiting the different meanings of a word or the fact that there are words of the same sound and different meanings.

INTERPRETING POLITICAL CARTOONS

- IRONY- expresses an idea through a contradiction between something's literal meaning and the intended meaning. For example, picturing a U.S. president with a crown on his head.

Ridicule

- Means: make fun of; mock.

INTERPRETING POLITICAL CARTOONS

- SARCASM- is a form of irony. The element that turns irony into sarcasm is the appearance of mockery, or bitterness.

Satire

- Means: Today satire is the use of humor, irony, exaggeration, or ridicule to expose and criticize people's stupidity or vices, particularly in the context of contemporary politics and other topical issues. In Latin literature a satire was a poem that ridiculed prevalent vices or follies.

INTERPRETING POLITICAL CARTOONS

- SATIRE - uses humor to lower something or someone in the reader's or viewer's estimation. It is not mean-spirited and its point is not to harm. It exposes human folly to make room for improvement.

Caricature

- Means: a depiction of a person in which distinguishing characteristics are exaggerated for comic or grotesque effect.

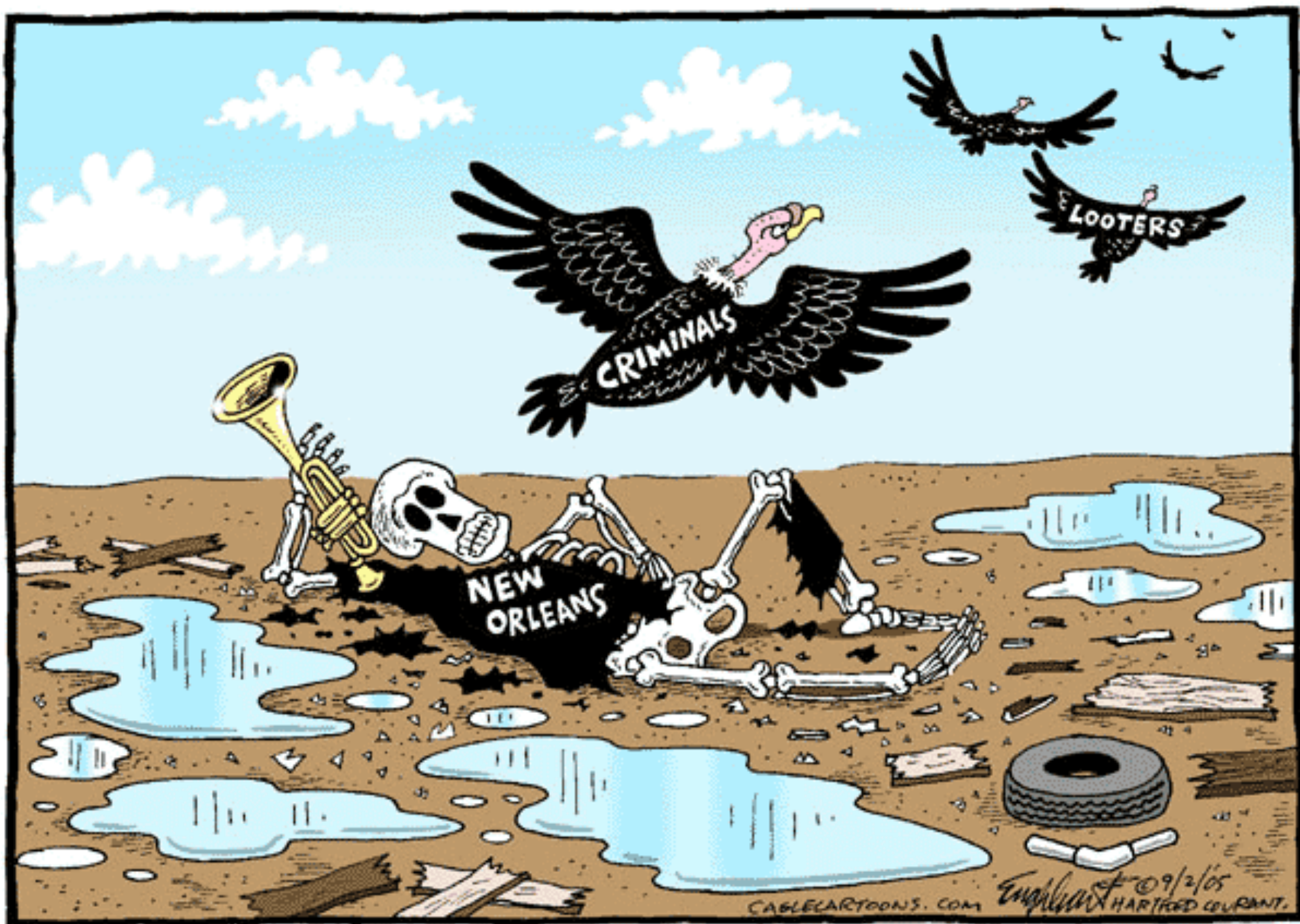
INTERPRETING POLITICAL CARTOONS

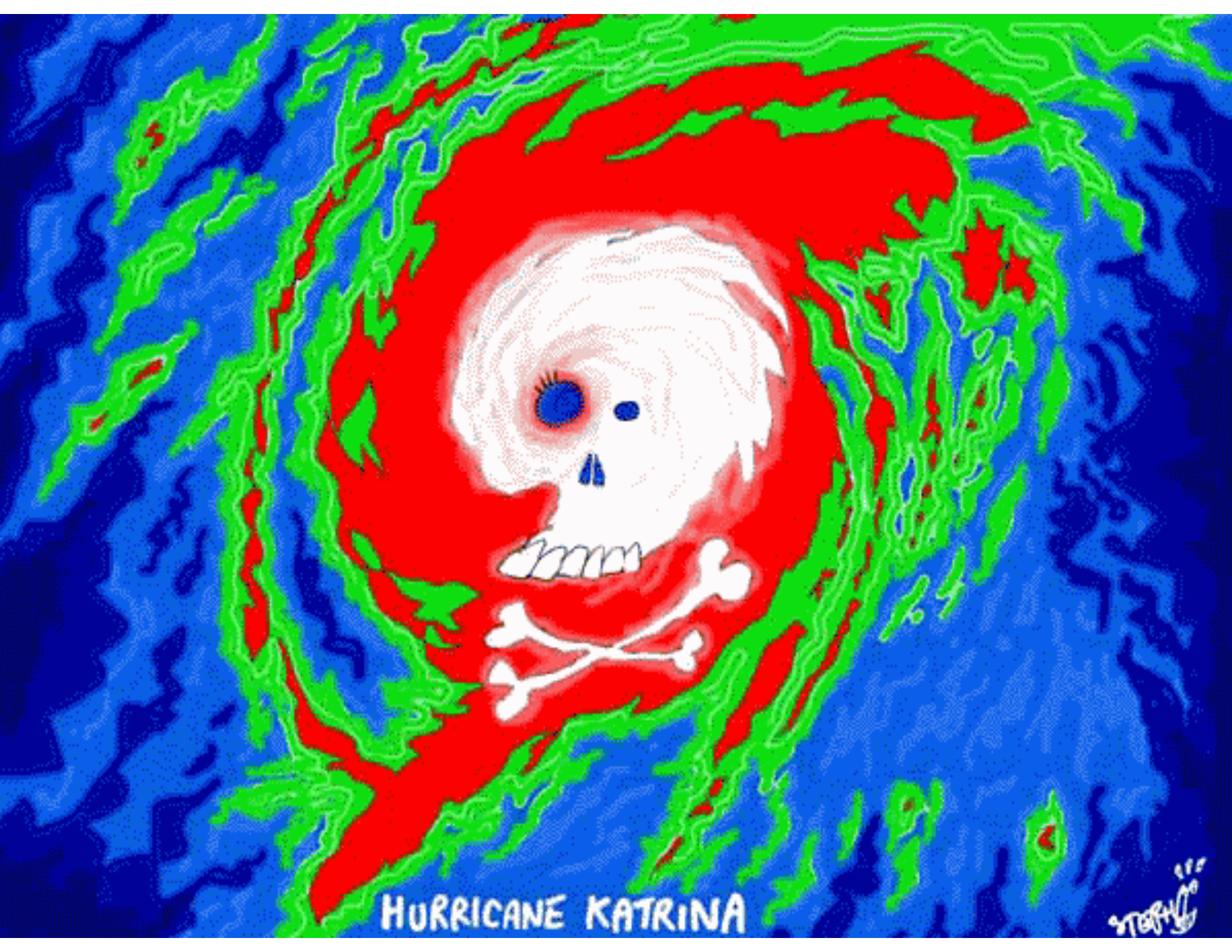
- CARICATURE - exaggerates one or more features of a person or thing. It attempts to say something about the person/thing's character, beliefs, actions or significance.



What is the purpose of a political cartoon?

- To expose one of two gaps;
 1. The gap between appearance and reality.
 2. The gap between what is and what should be or could be.
- They attempt to expose hypocrisy, point out pretentiousness, laugh at arrogance, deflate the powerful, and give voice to the underdog.





HURRICANE KATRINA

STORM



THE NEW COLOSSUS

(or, "Obesity Appalling the World")

Give me your doughnuts,
your chips,
Your huddled nachos
yearning to be cheesed,
The greasy refuse of your
deep-fry vat,
Send these, the super-sized,
by delivery van to me.
And give me fries with that.





NEW DICTATORSHIP FOR OLD ?...

LALO
ALCARAZ
©2004
DISTRIBUTED BY
UNIVERSAL PRESS
SYNDICATE





STAHLER. 2005.
©THE COLUMBUS DISPATCH.



Natural Disaster: The Second Wave

DARYL CAGLE MSNBC.COM

I DON'T LIKE WHAT I'VE
BEEN SEEING ON
THE NEWS!



A STEADY PARADE OF
PEOPLE WORRIED ABOUT
THE WAR...!



... CIVIL LIBERTIES, THE ECONOMY,
THE ENVIRONMENT, GAY RIGHTS...!



WE SHOULD HAVE NEVER TURNED ALL
THOSE GOP CONVENTION SPEECHES
OVER TO THE MODERATES!



INTERPRETING POLITICAL CARTOONS

- STEREOTYPES- works by taking a real or imagined trait of an individual to be true of the group to which the individual belongs. They express bias and can be unfair and harmful.

How to look at a Political Cartoon

- Identify text
- Identify symbols
- Identify caricatures
- Identify meaning
- Identify context of cartoon

Identify Text

- Are there any words or text?



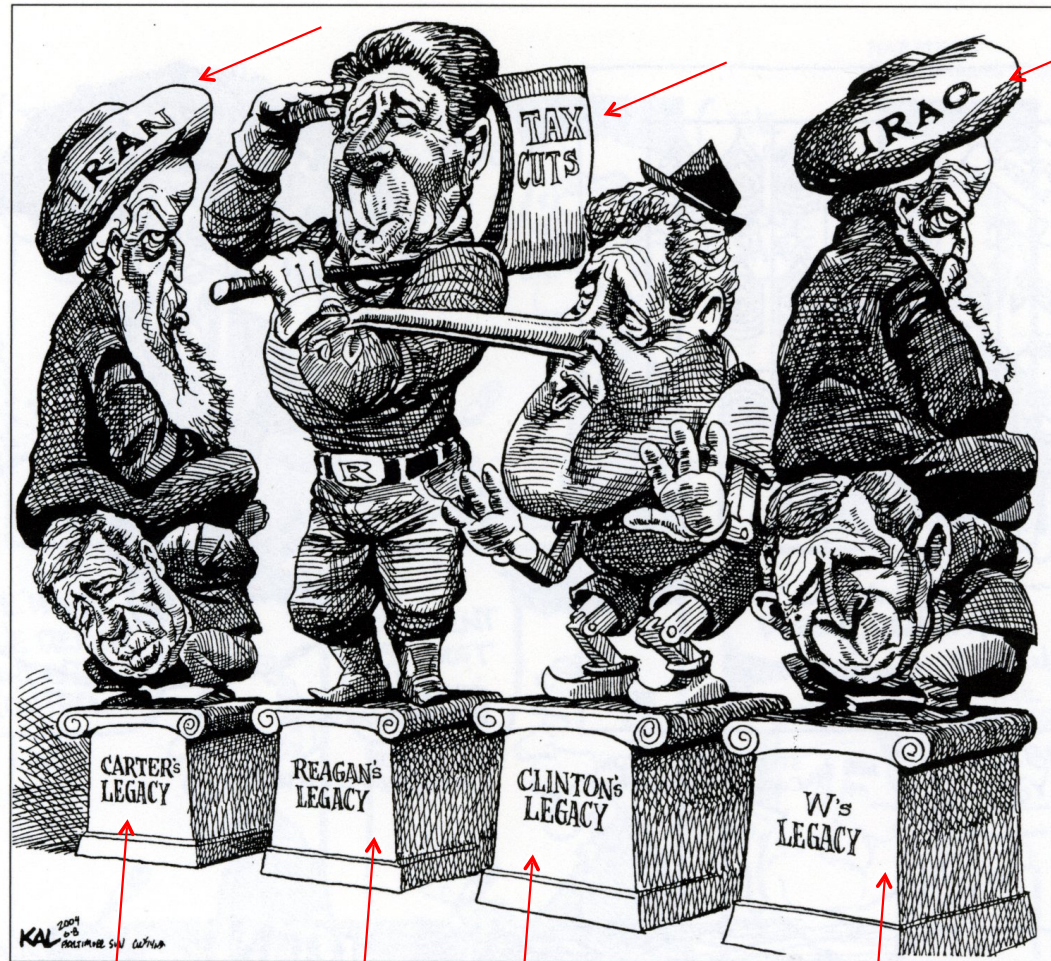
Identify Text

- Yes
- What are they?



Identify Text

- Any other words?



INTERPRETING POLITICAL CARTOONS

- SYMBOL- represents something else. It is often a material object that represents something abstract or invisible (for example, the Statue of Liberty to represent freedom).

Identify Symbols

- What are the Symbols?



Identify Symbols

- What are the Symbols?
- Ax
- Turban
- Large Nose
- Pedestals
- Pointy shoes



Identify Meaning

- Ax-cut taxes
- **Turban** - represents Muslims
- **Large Nose** - lying, Pinnocchio
- **Pedestals**-to stand over time posterity



Identify Caricatures

- Who are the faces?
- Carter
- Reagan
- Clinton
- Bush

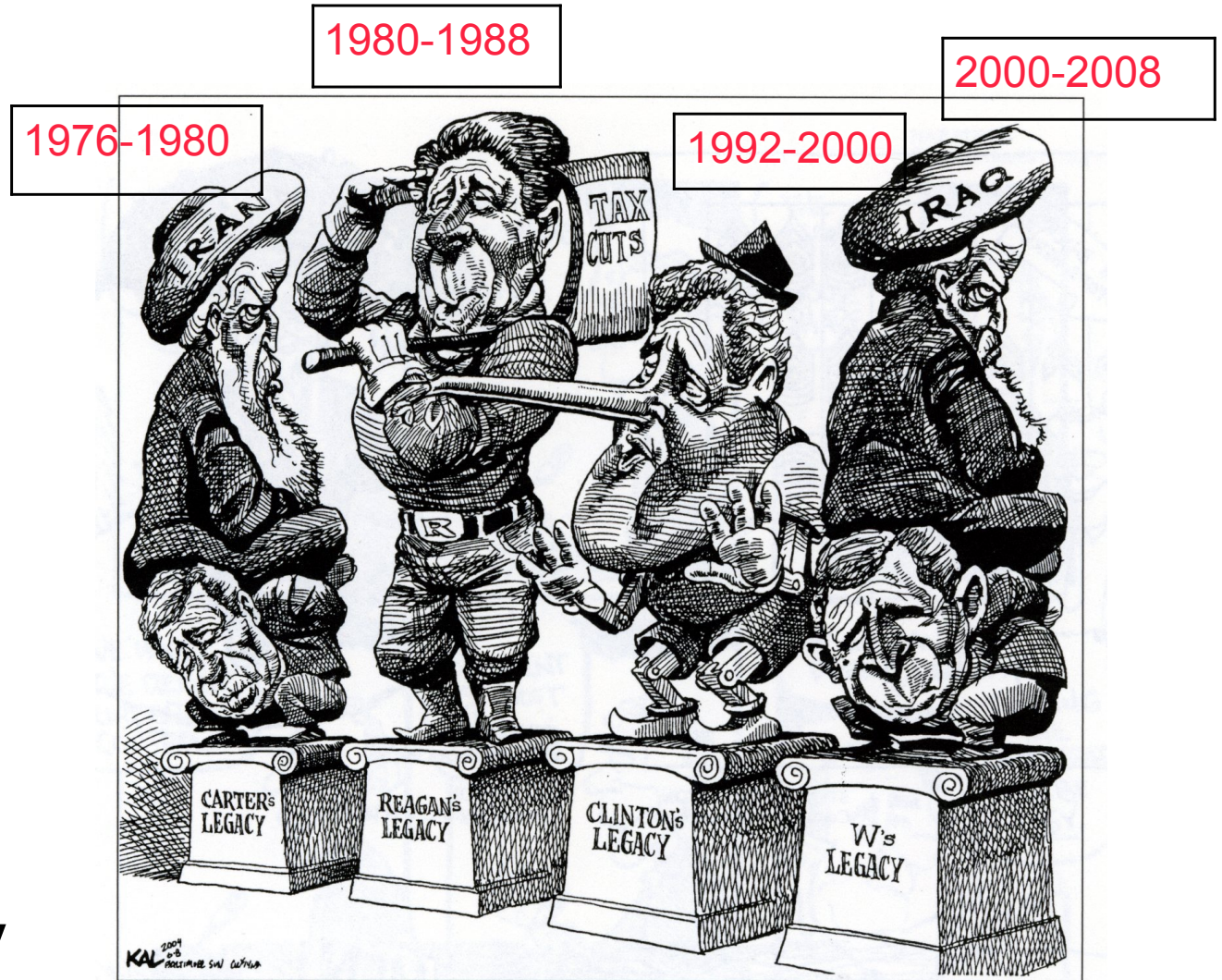


The Presidential Legacies and context

- Carter's legacy was his policies and decisions with Iran.
- Reagan's politics of less government and taxes, and large military.
- Clinton and his lies about intern Monica Lewinsky, to later be impeached, but stayed in office by one vote.
- Bush still has his foreign policy problems in Iraq.

Answers

- Tax Cuts
- Iran, Iraq
- Carter's Legacy
- Reagan's Legacy
- Clinton's Legacy
- W's Legacy



Own Interpretation

- Then while you write this work on your own ideas on what it might mean do to your thought on what has happened and should have happened!



Cartoon Analysis

1. What is the date and title if available?
2. List the key objects in the cartoon and describe what each represents
Object Symbolizes
3. What techniques or devices does the cartoonist use?
(ridicule, caricature, satire, puns, etc.)
4. What issue or event does the cartoon deal with?
5. Describe the action taking place.
6. What is the cartoon's message?
7. Who is the intended audience?
8. What is the cartoonist's point of view?
9. Does the cartoon clearly convey the desired message? Why or why not?
10. What groups would agree/disagree with the cartoon's message? Why?

Generally 3 paragraphs

1,2,3=1st Paragraph 4,5,6,7= 2nd Paragraph 8,9,10=3rd Paragraph